



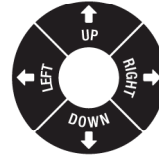
QUICK START – UNLOCK WITH MOBILE DEVICE

1. Remove lock & instructions from package.
 2. On mobile device, visit app store & download free Master Lock Vault eLocks app.
 3. Follow prompts to log into, or create, a Master Lock Vault account.
 4. In Master Lock Vault eLocks app, touch Add a Lock (+).
 5. Enter **ACTIVATION CODE** shown above to register lock & follow instructions to connect mobile device to lock.
 6. Touch any button on lock keypad to wake up lock & prompt it to communicate with your mobile device.
- Your lock is now in Touch Unlock mode. You can recalibrate the phone-to-lock communication range in the app settings.*



QUICK START – UNLOCK WITH LOCK KEYPAD

1. Remove lock & instructions from package.
 2. Enter **PRIMARY CODE** above by pressing the corresponding directions on lock keypad.
- Do not pull on the shackle when entering code.*
3. When lock lights green, open within 5 seconds or it will relock.



LED KEYPAD INDICATORS

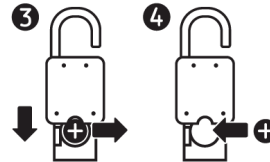
BLUE	GREEN	YELLOW	RED
Locked, Communicating, or Keypad Entry	Open or Unlocked & Waiting To Be Opened	Low Battery	Invalid Keypad Entry



Model 4400 Battery Instructions

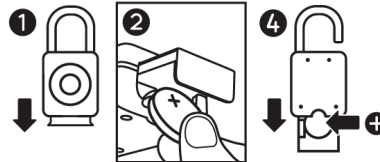
HOW TO REPLACE BATTERY

1. Lock will light yellow to indicate a low battery.
2. Unlock & open the lock.
3. Pull out battery drawer & remove old battery.
4. Install a new CR2450 battery with positive (+) side facing the back of the lock.
5. Close battery drawer.



HOW TO UNLOCK WITH EXTERNAL BATTERY

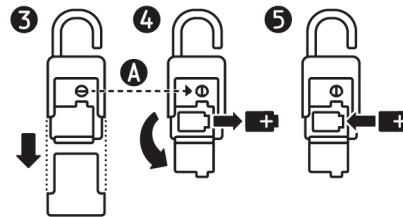
1. If battery dies in locked position, pull battery drawer out part way to expose jump contact point.
- Do not force the drawer open any further.*
2. Hold a new CR2450 battery in the slot with positive (+) side of battery facing the front of the lock.
 3. While holding the battery in place, with authorized mobile device within range of lock, press any keypad button on the lock (if in Touch Unlock mode). If lock does not unlock, enter Primary Code on lock keypad.
 4. When unlocked, pull out battery drawer & install a new CR2450 battery.



Model 4401 Battery Instructions

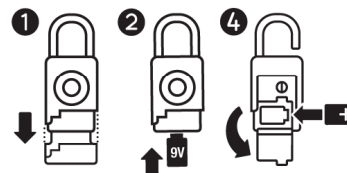
HOW TO REPLACE BATTERY

1. Lock will light yellow to indicate a low battery.
2. Unlock & open the lock.
3. Remove bottom cover.
4. Use a coin to turn battery door slot 90 degrees counter clockwise (A). Open battery door & remove old battery.
5. Install a new CR2 battery with positive (+) side facing right.
6. Close battery door, turn slot back 90 degrees clockwise & replace bottom cover.



HOW TO UNLOCK WITH EXTERNAL BATTERY

1. If the battery dies in locked position, remove bottom cover.
2. Hold a 9V battery to jump contacts on bottom of lock.
3. While holding the battery in place, with authorized mobile device within range of lock, press any keypad button on the lock (if in Touch Unlock mode). If lock does not unlock, enter Primary Code on lock keypad.
4. When unlocked, open battery door & install a new CR2 battery.



Notice: This padlock and its operating software are subject to U.S. Export Administration Regulation controls. The padlock is subject to ECCN 5A992 and the downloadable app is subject to ECCN 5D992 as mass market software. Exporting this padlock and/or its software contrary to U.S. law is prohibited.

Notice: This device complies with Industry Canada licence-exempt RSS standard(s). Operation is subject to the following two conditions: (1) this device may not cause interference, and (2) this device must accept any interference, including interference that may cause undesired operation of the device.